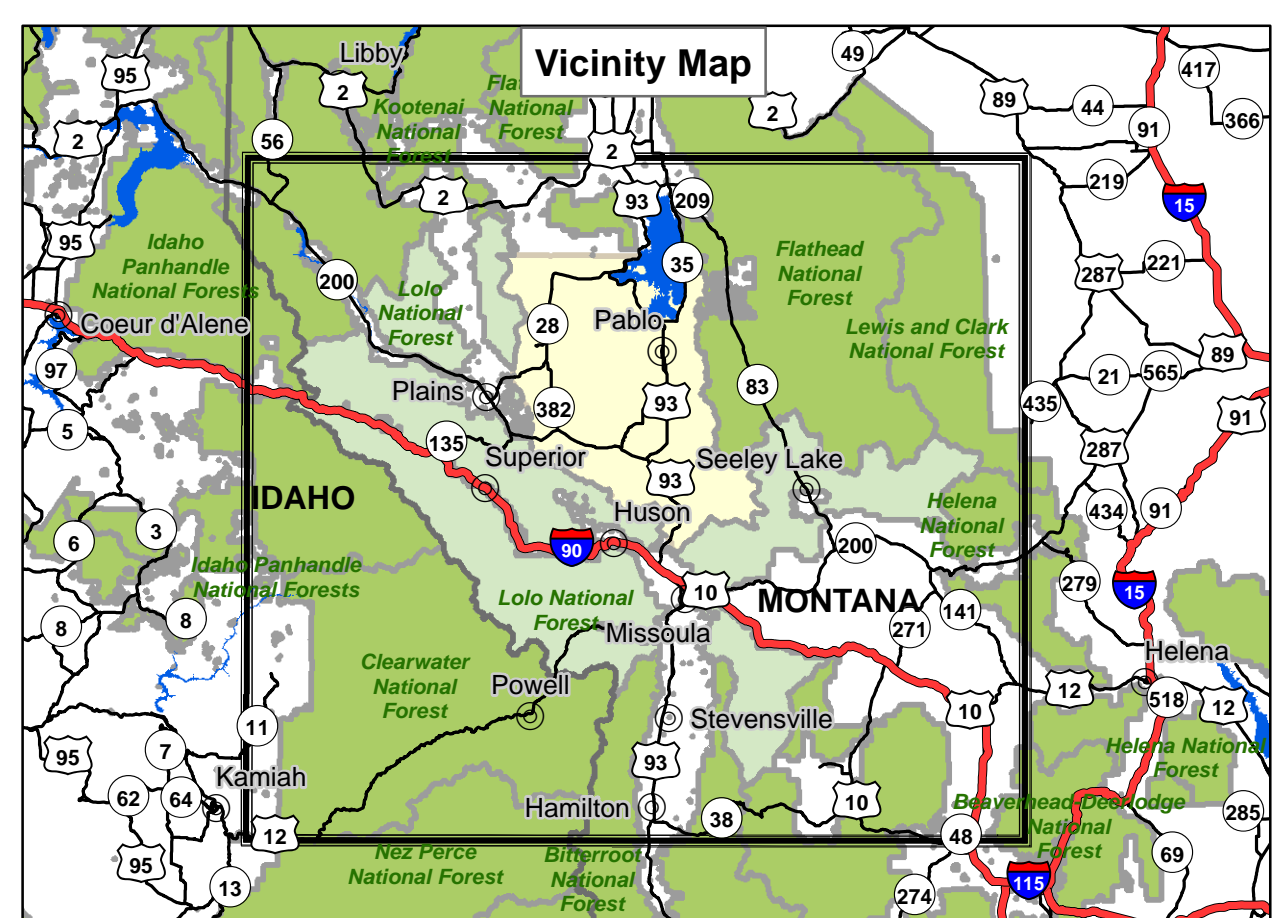


2023 Lolo National Forest / Flathead Reservation Aviation Hazards Map

Derived from FAA Great Falls Sectional Chart issued 23 FEB 2023

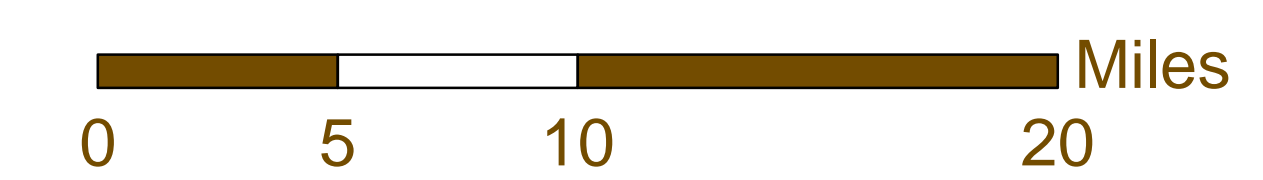
Map Not to Be Used for Navigational Purposes

DISCLAIMER: The USDA Forest Service (Forest Service) attempts to use the most current and complete data available. GIS data and product accuracy may vary. They may be developed from sources of differing accuracy; accurate only at certain scales; based on modeling or interpretation; incomplete, or under revision. Using GIS products for purposes other than those for which they were created may yield inaccurate or misleading results. The Forest Service reserves the right to correct, update, modify, or replace GIS products without notification. There is no assurance that all hazardous obstacles or activities are displayed on this map or that the ones that are displayed are in the right location. The Forest Service assumes no responsibility for the interpretation or application of this data by others.



Legend

- Lookouts
- Air Tanker Jettison Areas
- Parachute Jumping Areas
- Hospitals
- Ski Areas
- Wilderness Areas
- HIFLD Tower Point
- Lolo National Forest
- Flathead Reservation



Document Path: T:\P\B\F\Low\Program\010\FireMgmt\GIS\Workspace\Johnson\FlightHazards\NF_AviationHazards_20230306_arch1.mxd
 Date: 3/6/2023
 Author: East Zone GIS

